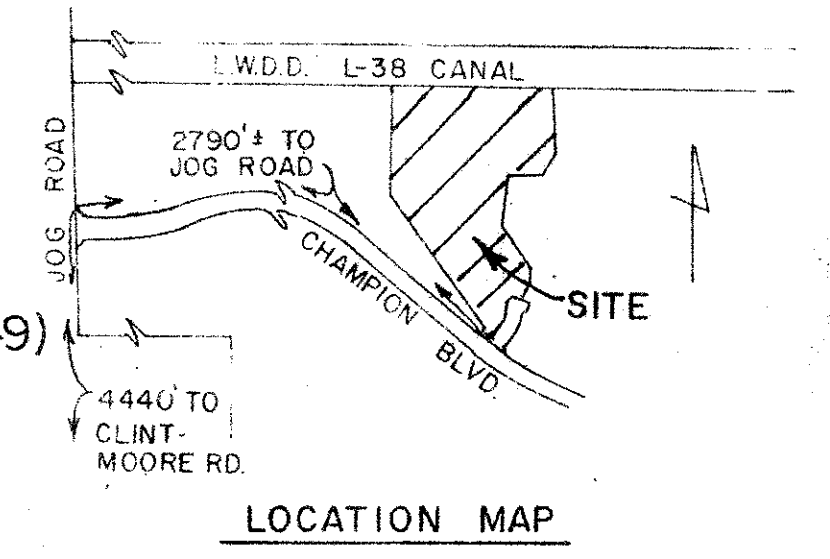


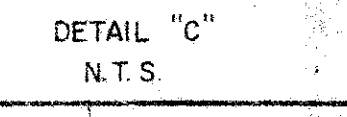
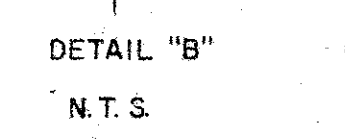
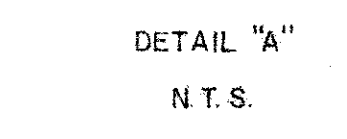
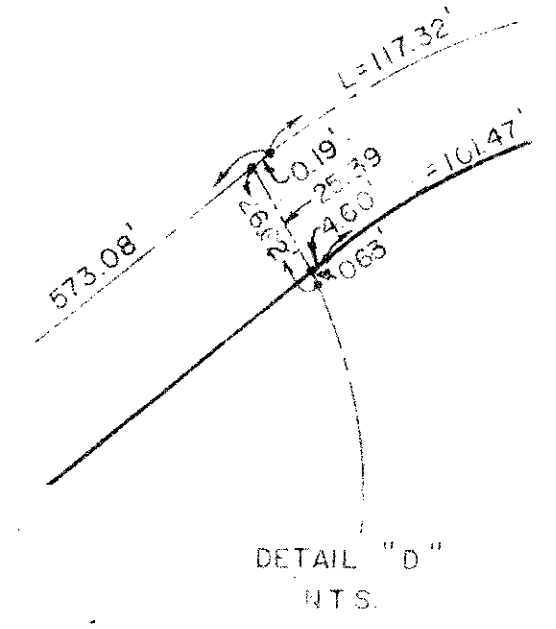
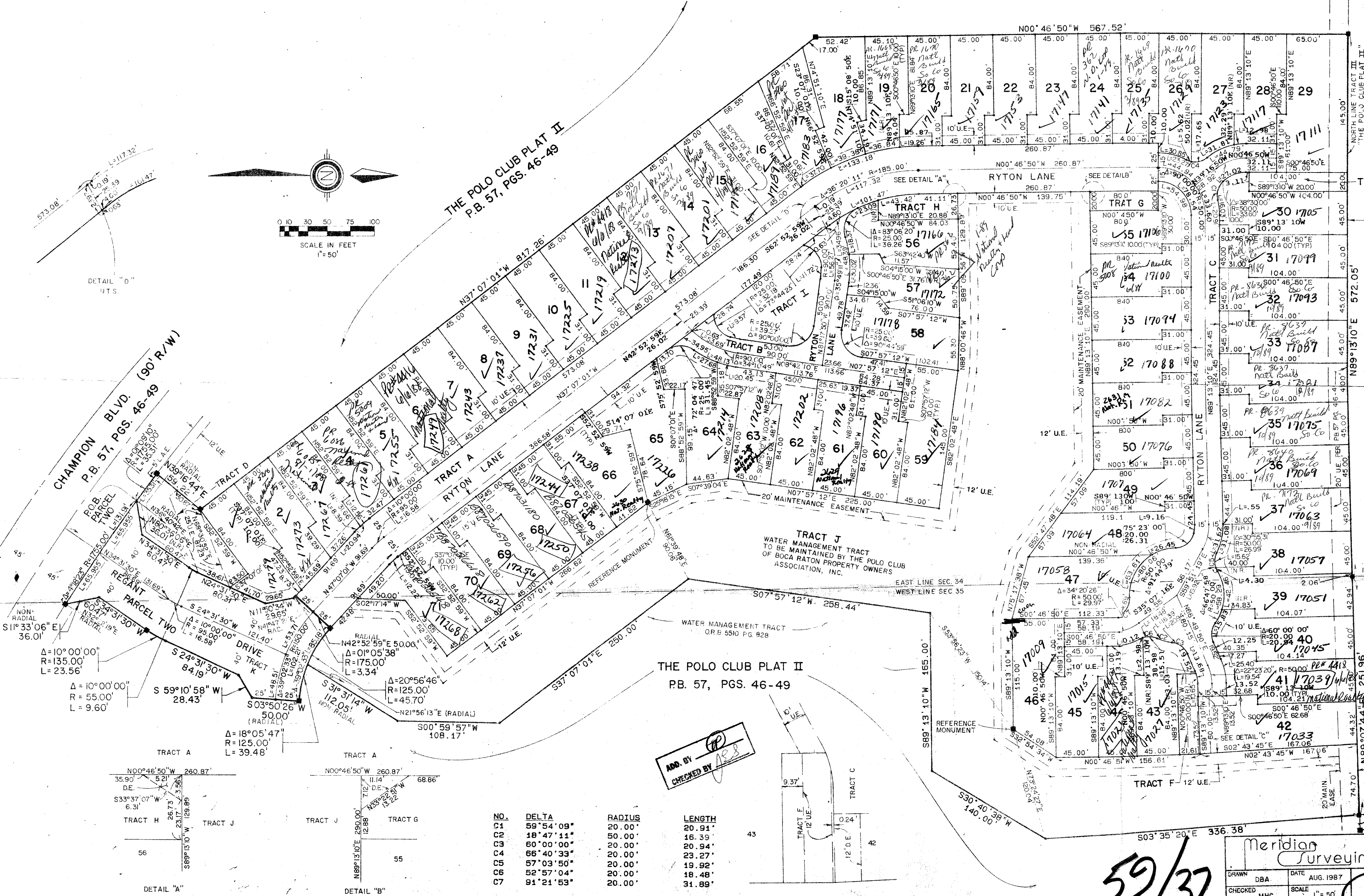
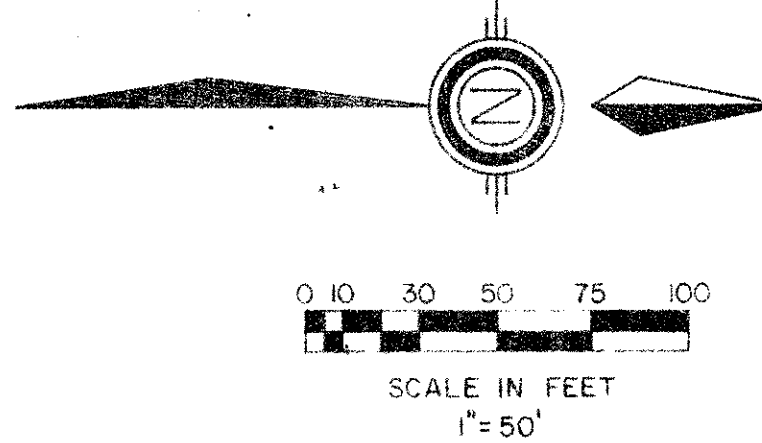
HAMPTON COURT OF THE POLO CLUB

A PART OF THE POLO CLUB P.U.D.
BEING A REPLAT OF A PORTION OF TRACT III, "THE POLO CLUB PLAT II" (PB.57 PGS.46-49)
SITUATE IN SECTIONS 34 AND 35, TOWNSHIP 46 SOUTH, RANGE 42 EAST
PALM BEACH COUNTY, FLORIDA

1988 SHEET 2 OF 2



STATE OF FLORIDA
COUNTY OF PALM BEACH
THIS PLAN WAS FILED FOR RECORD THIS DAY OF AD, 1988 AND DULY RECORDED IN PLAT BOOK ON PAGES AND
JOHN B. DUNKLE, CLERK BY: _____ D.C.



NO.	DELTA	RADIUS	LENGTH
C1	59°54'09"	20.00'	20.91'
C2	18°47'11"	50.00'	16.39'
C3	60°00'00"	20.00'	20.94'
C4	66°40'33"	20.00'	23.77'
C5	57°03'50"	20.00'	19.92'
C6	52°57'04"	20.00'	18.48'
C7	91°21'53"	20.00'	31.89'

ADD. BY [Signature]
CHECKED BY [Signature]

SUBDIVISION BOOK 37
PAGE 33-34
35-36-37
P.U.D. 84-71

2/15A
2/5/88

0436-003
2000 LOMBARD STREET
WEST PALM BEACH, FL

Meridian Surveying and Mapping Inc.
DRAWN DBA DATE AUG. 1987
CHECKED MHC SCALE 1"=50'
DRAWING NO. 09331D
HAMPTON COURT OF THE POLO CLUB

59/32